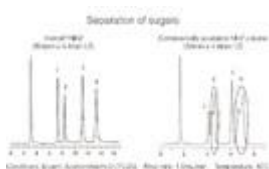


Inertsil NH-2

- Unique selectivity in both reverse and normal phase modes
- Does not lead to anomer resolution in sugar analysis
- Analyze sugars with exceptional column lifetime
- Exceptional reproducibility for an amino phase
- Low operating pressures even in highly aqueous conditions

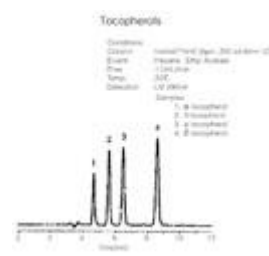
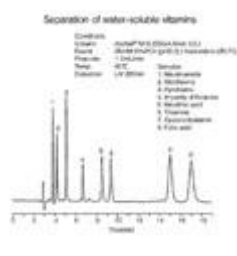


Many commercially available NH₂ (amino) phases are modified in order to increase stability to hydrolysis. However, this modification often leads to anomer resolution in sugar analysis.

Inertsil NH₂ columns are bonded in a manner which does not lead to anomer resolution, because the primary amino groups are not modified.

This leads to more accurate qualitative and quantitative results.

- The Inertsil 3-series represents a major advance in performance over the original Inertsil 2-Series. Inertsil 3-Series phases, including ODS-3, ODS-3V, ODS-P, ODS-EP, C8-3, Ph-3, CN-3, NH₂, and SIL-100Å, are based on a purer, higher surface area silica which is specially manufactured to provide maximum bonded phase coverage. The result is a series of columns which provide excellent peak shapes using simple eluents while operating at low pressure



Particle Size(s)	Particle Shape	Surface Area	Pore Size	Pore Volume	Silica Purity	Bonded Phase	End-Capping	Carbon Load	pH Range*
5 µm	Spherical	450 m ² /g	100Å	1.05 mL/g	99.999%	Aminopropyl	No	8.0%	2 - 7.5

* Inertsil phases are known to provide excellent results and long column life at pH levels of 9 or 10. However, optimum column life will likely be achieved by operating at a pH of between 2 and 7.5.