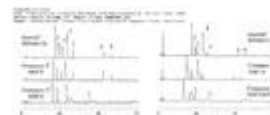


# Inertsil WP300 C18

- Super pure wide pore ( 300Å ) silica provides superior chromatography
- High bonded phase coverage results in sharp and symmetric peaks
- Rigid silica formulation provides physical and chemical stability
- Exceptional reproducibility
- Low operating pressures even in highly aqueous conditions

The new Inertsil WP300 series of columns brings the same legendary performance of Inertsil's narrow-pore HPLC products to columns designed for protein and peptide analysis. The WP300 series currently consists of WP300C8, WP300C18, WP300Diol, WP300C4, WP300SIL and Peptide C18.



Inertsil WP300 columns are available in 5 micron particle size in column configurations ranging from capillary to 50mm ID preparative sizes.

Particle Size(s)	Particle Shape	Surface Area	Pore Size	Pore Volume	Silica Purity	Bonded Phase	End-Capping	Carbon Load	pH Range*
5 µm	Spherical	150 m <sup>2</sup> /g	300Å	1.05 mL/g	99.999	C18, C8, C4, Diol	Yes	%	2 - 7.5
5 µm	Spherical	450 m <sup>2</sup> /g	100Å	1.05 mL/g	99.999	Peptide C18	Yes	15%	2 - 9

\* Inertsil phases are known to provide excellent results and long column life at pH levels of 9-10. However, optimum column life may be achieved at a pH between 2 and 7.5.

[www.winlab.com.au](http://www.winlab.com.au)

Ph: 61 07 3205 5233

Fax: 61 07 3205 1209