



## Multifunctional Clean up SPE column for Sample Preparation of **Aflatoxin**

### BENEFITS:

- For Total Aflatoxin (B<sub>1</sub>, B<sub>2</sub>, G<sub>1</sub>, G<sub>2</sub>)
- Superior for Grain, Pulse and Nut samples

### Product lineup



- InertSep Myco 2160 (Standard)
- InertSep Myco 2140 (Half Size)
- InertSep Myco 2180 (Enhanced Reversed Phase)



Cat. No.	Description	Specification	Units
5010-68130	InertSep Myco 2160 6mL	Reversed Phase + Cation Exchange + Anion Exchange Volume: 6mL	25/pk
5010-68131	InertSep Myco 2140 6mL	Half the Size of InertSep Myco 2160 Volume: 6mL	25/pk
5010-68132	InertSep Myco 2180 6mL	Enhanced Reversed Phase of InertSep Myco 2160 Volume: 6mL	25/pk

#### Available from:

Winlab Pty Ltd in Australia and New Zealand

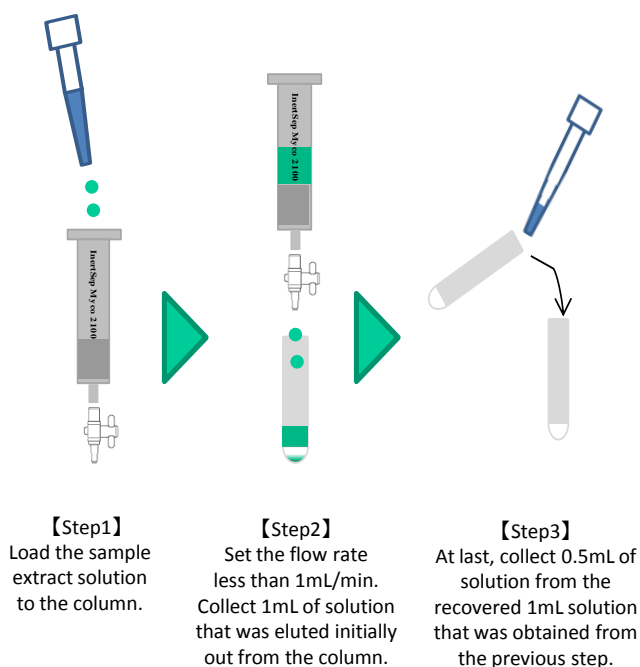
[www.winlab.com.au](http://www.winlab.com.au)

Contact: [info@winlab.com.au](mailto:info@winlab.com.au) or call 61 07 3205 5233

# Usage Examples of InertSep Myco 2100 Series

InertSep Myco 2100 series has been developed for Multifunctional Clean up SPE column for Sample Preparation of **Aflatoxin**. It consists a mixed packing material of reversed phase, cation exchange and anion exchange.

Purification of sample can be done very easily by simply loading the extracted sample solution to the column. (Conditioning procedure is NOT required)



\* The optimum flow rate is from 0.5 to 1.0mL/min. If necessary, use a Luer Stop Valve (Cat. No. 5010-60010), which is sold separately.

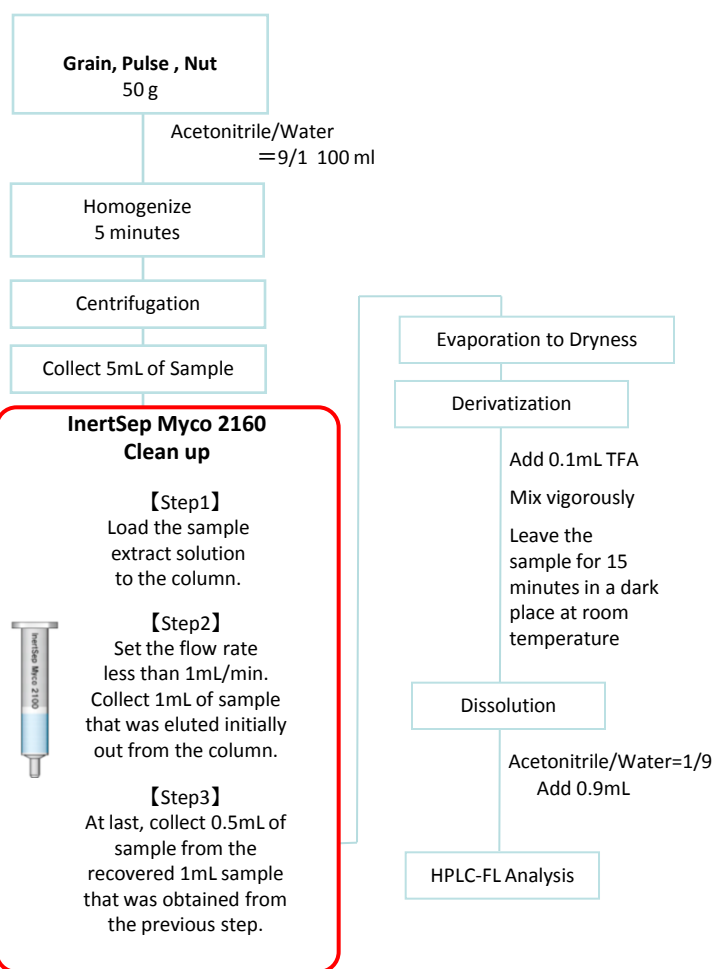


Fig.1  
How to use InertSep Myco

Fig.2  
Example Protocol of  
Sample Preparation of Aflatoxin

If you are using the following Romer Lab's columns,  
please try our **InertSep Myco**.

Cat. No.	Description	Equivalent Product (Romer Labs)
5010-68130	InertSep Myco 2160 6mL	MultiSep #226
5010-68131	InertSep Myco 2140 6mL	MultiSep #224
5010-68132	InertSep Myco 2180 6mL	MultiSep #228