



Sepax Technologies, Inc.

Available from:

Winlab Pty Ltd in Australia and New Zealand

www.winlab.com.au

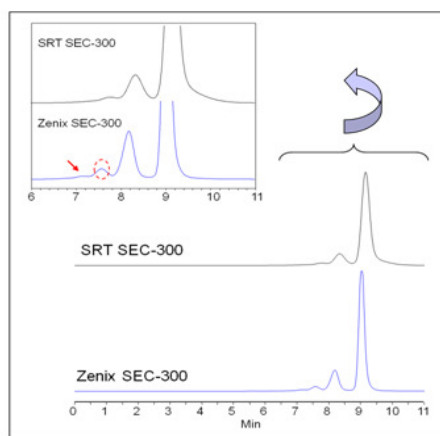
Contact: info@winlab.com.au or call 61 07 3205 5233

Your Manufacturing Partner for Bioseparation HPLC Columns

Sepax Technologies, Inc. Delaware, U.S. based HPLC column manufacturer, specialized in bioseparation SEC and IEX HPLC columns for large molecule protein and MAb separation and most comprehensive small molecule separation phases including HILIC, Supercritical Fluid Chromatography (SFC), RP, sub2 micron UHPLC silica and PS/DVB based phases from analytical to preparative scale.

1) **Zenix™ 3um and SRT® 5um SEC** Highest resolution and efficiency SEC in the market (High Resolution and lot-to-lot consistent alternative to TSK Super and SW series), made of proprietary uniform, hydrophilic, and neutral nanometer surfaced layered silica results in highly reproducible separation power for large molecule separation.

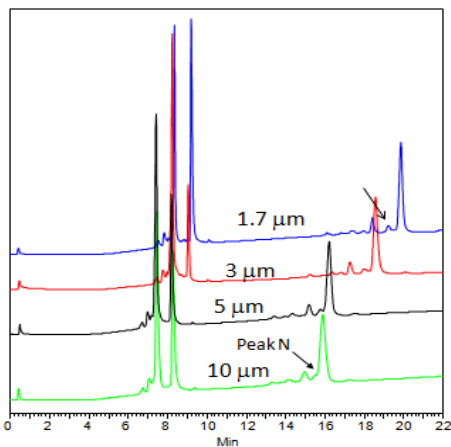
High Resolution Difference – 3um vs. 5um SEC



Columns:
SRT 5um, Zenix 3um,
7.8x300mm
Mobile phase:
150mM Phosphate Buffer, pH 7
Flow rate: 1 mL/min
Temperature: ambient
Detection: UV 214 nm
Sample: BSA (5mg/ml)
Injection: 10 µL

2) **Proteomix® IEX**, NP1.7, 3, 5, 10 with lot-to-lot consistent high resolution and high capacity for Protein, Oligo, Peptide, Carbohydrate, and etc application.

Separation of Proteins vs. Ion-exchange Resin Size

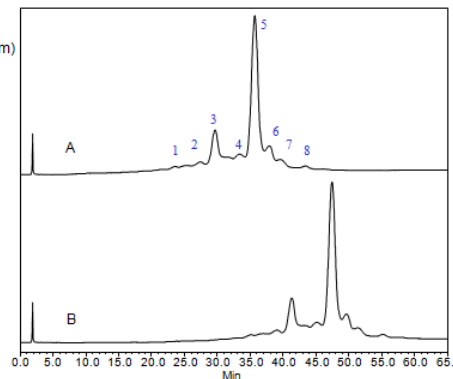


Proteomix WCX-NP (4.6x50mm)
A: 20 mM PBS
B: A+1.0 M NaCl
0-100%B (20 min)
Flow rate:
1.0 mL/min
0.75 mL/min (WCX-NP1.7)
Proteins (1.0 mg/mL):
1. Ribonuclease A
2. Cytochrome C
3. Lysozyme
UV 280 nm

3) **Antibodix™ WCX** available in NP1.7, 3, 5, 10 for MAb separation (High Resolution alternative to Dionex Propac)

MAb separation - as many as **eight peaks** separated

Columns:
Antibodix-NP10 (10 µm, 4.6x250 mm)
Mobile phase:
A, 10 mM phosphate, pH 7.0
B, A + 0.1M NaCl
Gradient:
A) 25-75%B in 60 min
B) 15-65%B in 60 min
Flow rate: 0.8 mL/min
Temperature: 25°C
Detection: UV 214 nm
Sample: MAb-X22
Injection: 10 µL (1.5 mg/mL)



Tosoh Biosciences (TSK) to Sepax SEC Cross Reference



TSK P/N #	TSK Product	Sepax P/N #	Sepax Product
Glass Column			
16214	QC-PAK GFC 200GL, 8mmx15cm, 5um	215150-7815	SRT SEC-150, 7.8mmx15cm, 5µm
16216	QC-PAK GFC 300GL, 8mmx15cm, 5um	215300-7815	SRT SEC-300, 7.8mmx15cm, 5µm
08799	G2000SW, 8mmx30cm, 10um	225150-7830	SRT SEC-150, 7.8mmx30cm, 10µm
08800	G3000SW, 8mmx30cm, 10um	225300-7830	SRT SEC-300, 7.8mmx30cm, 10µm
08801	G4000SW, 8mmx30cm, 13um	225500-7830	SRT SEC-500, 7.8mmx30cm, 10µm
14464	G3000SW, 20mmx30cm, 13um	225300-21230	SRT SEC-300, 21.2mmx30cm, 10µm
(More Peek dimensions available upon request)			
Stainless Steel Column			
18674	SuperSW2000, 4.6mmx30cm, 4um	213150-4630	Zenix SEC-150, 4.6mmx30cm, 3µm
21845	SuperSW3000, 1mmx30cm, 4um	213300-1030	Zenix SEC-300, 1.0mmx30cm, 3µm
21485	SuperSW3000, 2mmx30cm, 4um	213300-2130	Zenix SEC-300, 2.1mmx30cm, 3µm
18675	SuperSW3000, 4.6mmx30cm, 4um	213300-4630	Zenix SEC-300, 4.6mmx30cm, 3µm
08540	G2000SWxl, 7.8mmx30cm, 5um	215150-7830	SRT SEC-150, 7.8mmx30cm, 5µm
08541	G3000SWxl, 7.8mmx30cm, 5um	215300-7830	SRT SEC-300, 7.8mmx30cm, 5µm
08542	G4000SWxl, 7.8mmx30cm, 8um	215500-7830	SRT SEC-500, 7.8mmx30cm, 5µm
16215	QC-PAK GFC 200, 7.8mmx15cm, 5um	215150-7815	SRT SEC-150, 7.8mmx15cm, 5µm
16049	QC-PAK GFC 300, 7.8mmx15cm, 5um	215300-7815	SRT SEC-300, 7.8mmx15cm, 5µm
05788	G2000SW, 7.5mmx30cm,10um	225150-7830	SRT SEC-150, 7.8mmx30cm, 10µm
05789	G3000SW, 7.5mmx30cm,10um	225300-7830	SRT SEC-300, 7.8mmx30cm, 10µm
05790	G4000SW, 7.5mmx30cm, 13um	225500-7830	SRT SEC-500, 7.8mmx30cm, 10µm
05102	G2000SW, 7.5mmx60cm,10um	225150-7860	SRT SEC-150, 7.8mmx60cm, 10µm
05103	G3000SW, 7.5mmx60cm,10um	225300-7860	SRT SEC-300, 7.8mmx60cm, 10µm
05104	G4000SW, 7.5mmx60cm,13um	225500-7860	SRT SEC-500, 21.2mmx30cm, 10µm
06727	G2000SW, 21.5mmx30cm,10um	225150-21230	SRT SEC-150, 21.2mmx30cm, 10µm
06728	G3000SW, 21.5mmx30cm,10um	225300-21230	SRT SEC-300, 21.2mmx30cm, 10µm
06729	G4000SW, 21.5mmx30cm,13um	225500-21230	SRT SEC-500, 21.2mmx30cm, 10µm
05146	G2000SW, 21.5mmx60cm, 13um	225150-21260	SRT SEC-150, 21.2mmx60cm, 10µm
05147	G3000SW, 21.5mmx60cm,13um	225300-21260	SRT SEC-300, 21.2mmx60cm, 10µm
05148	G4000SW, 21.5mmx60cm,17um	225500-21260	SRT SEC-500, 21.2mmx30cm, 10µm
07428	G2000SW, 55mmx30cm, 20um	225150-50030	SRT SEC-150, 50mmx30cm, 10µm
07481	G3000SW, 55mmx30cm, 20um	225300-50030	SRT SEC-300, 50mmx30cm, 10µm
07429	G2000SW, 55mmx60cm, 20um	225150-50060	SRT SEC-150, 50mmx60cm, 10µm
07482	G3000SW, 55mmx60cm, 20um	225300-50060	SRT SEC-300, 50mmx60cm, 10µm
(More Peek dimensions available, please inquire)			
PEEK Columns			
20027	BioAssist G2SWxl, 7.8mmx30cm, 5um	215150P-7830	SRT SEC-150, 7.8mmx30cm, 5µm
20026	BioAssist G3SWxl, 7.8mmx30cm, 5um	215300P-7830	SRT SEC-300, 7.8mmx30cm, 5µm
20025	BioAssist G4SWxl, 7.8mmx30cm, 8um	215500P-7830	SRT SEC-500, 7.8mmx30cm, 5µm
(More Guard dimensions available, please inquire)			
Guard Columns			
08805	SW Guard column, 8mmx4cm, Glass	215xx0-7850	SRT SEC Guard, 7.8mmx5cm
14465	SW Guard column, 20mmx4cm, Glass	215xx0-21250	SRT SEC Guard, 21.2mmx5cm
18762	SuperSW Guard column, 4.6mmx3.5cm	215xx0-4650	SRT SEC Guard, 4.6mmx5cm
08542	SWxl Guard column, 6mmx4cm	215xx0-4650	SRT SEC Guard, 4.6mmx5cm
18008	SWxl Guard column, Peek, 6mmx4cm	215xx0-4650	SRT SEC Guard, 4.6mmx5cm, Peek
05371	SW Guard column, 7.5mmx7.5cm	215xx0-7850	SRT SEC Guard, 7.8mmx5cm
05758	SW Guard column, 21.5mmx7.5cm	215xx0-21250	SRT SEC Guard, 21.2mmx5cm
07427	SW Guard column, 45mmx5cm	215xx0-50050	SRT SEC Guard, 50mmx5cm

Dionex to Sepax IEX Cross Reference



NP1.7, 3, 5 and PEEK available

Dionex P/N	Dionex Product	Sepax P/N	Sepax Product (NP 1.7, 3, and 5um and PEEK also available)
	WCX Analytical Columns		WCX Analytical Columns
063472	ProPac WCX-10 Analytical Column (2 x 250 mm)	602NP10-2125	Antibodix WCX NP10, 2.1x250mm
SP5829	ProPac WCX-10 Analytical Column (4 x 100 mm)	602NP10-4610	Antibodix WCX NP10, 4.6x100mm
054993	ProPac WCX-10 Analytical Column (4 x 250 mm)	602NP10-4625	Antibodix WCX NP10, 4.6x250mm
SP5512	ProPac WCX-10 Lot Select 3 Column Set (4 x 250 mm) (1 Lot of Resin)	602NP10-4625-1	Antibodix WCX NP10, 4.6x250mm (1 lot of resin)
SP5513	Resin)	602NP10-4625-3	Antibodix WCX NP10, 4.6x250mm (3 lots of resin)
063474	ProPac WCX-10 Semi-Preparative Column (9 x 250 mm)	602NP10-10025	Antibodix WCX NP10, 10x250mm
SP5482	ProPac WCX-10 Semi-Preparative Column (22 x 250 mm)	602NP10-21225	Antibodix WCX NP10, 21.2x250mm
	WCX Guard Columns		WCX Guard Columns
063480	ProPac WCX-10G Guard Column (2 x 50 mm)	602NP10-2105	Antibodix WCX NP10, 2.1x50mm, Guard
054994	ProPac WCX-10G Guard Column (4 x 50 mm)	602NP10-4605	Antibodix WCX NP10, 4.6x50mm, Guard
	SCX Analytical Columns		SCX Analytical Columns
054995	ProPac SCX-10 Analytical Column (4 x 250 mm)	401NP10-4625	Proteomix SCX NP10, 4.6x250mm
063456	ProPac SCX-10 Analytical Column (2 x 250 mm)	401NP10-2125	Proteomix SCX NP10, 2.1x250mm
063700	ProPac SCX-10 Semi-Preparative Column (9 x 250 mm)	401NP10-10025	Proteomix SCX NP10, 10x250mm
SP5522	ProPac SCX-10 Semi-Preparative Column (22 x 250 mm)	401NP10-21225	Proteomix SCX NP10, 21.2x250mm
SP5727	ProPac SCX-10 Lot Select Column Set (4 x 250 mm) (1 Lot of Resin)	401NP10-4625-1	Proteomix SCX NP10, 4.6x250mm (1 lot of resin)
SP5728	ProPac SCX-10 Lot Select Column Set (4 x 250 mm) (3 Lots of Resin)	401NP10-4625-3	Proteomix SCX NP10, 4.6x250mm (3 lots of resin)
	SCX Guard Columns		SCX Guard Columns
054996	ProPac SCX-10G Guard Column (4 x 50 mm)	401NP10-4605	Proteomix SCX NP10, 4.6x50mm, Guard
063462	ProPac SCX-10G Guard Column (2 x 50 mm)	401NP10-2105	Proteomix SCX NP10, 2.1x50mm, Guard
	SAX Analytical Columns		SAX Analytical Columns
063448	ProPac SAX-10 Analytical Column (2 x 250 mm)	403NP10-2125	Proteomix SAX NP10, 2.1x250mm
054997	ProPac SAX-10 Analytical Column (4 x 250 mm)	403NP10-4625	Proteomix SAX NP10, 4.6x250mm
SP5729	ProPac SAX-10 Lot Select Column Set (4 x 250 mm) (1 Lot of Resin)	403NP10-4625-1	Proteomix SAX NP10, 4.6x250mm (1 lot of resin)
SP5730	ProPac SAX-10 Lot Select Column Set (4 x 250 mm) (3 Lots of Resin)	403NP10-4625-3	Proteomix SAX NP10, 4.6x250mm (3 lots of resin)
063703	ProPac SAX-10 Semi-Preparative Column (9 x 250 mm)	403NP10-10025	Proteomix SAX NP10, 10x250mm
SP5594	ProPac SAX-10 Semi-Preparative Column (22 x 250 mm)	403NP10-21225	Proteomix SAX NP10, 21.2x250mm
	SAX Guard Columns		SAX Guard Columns
063454	ProPac SAX-10G Guard Column (2 x 50 mm)	403NP10-2105	Proteomix SAX NP10, 2.1x50mm, Guard
054998	ProPac SAX-10G Guard Column (4 x 50 mm)	403NP10-4605	Proteomix SAX NP10, 4.6x50mm, Guard
	WAX Analytical Columns		WAX Analytical Columns
063464	ProPac WAX-10 Analytical Column (2 x 250 mm)	404NP10-2125	Proteomix WAX NP10, 2.1x250mm
054999	ProPac WAX-10 Analytical Column (4 x 250 mm)	404NP10-4625	Proteomix WAX NP10, 4.6x250mm
SP5731	ProPac WAX-10 Lot Select Column Set (4 x 250 mm) (1 Lot of Resin)	404NP10-4625-1	Proteomix WAX NP10, 4.6x250mm(1 lot of resin)
SP5732	ProPac WAX-10 Lot Select Column Set (4 x 250 mm) (3 Lots of Resin)	404NP10-4625-3	Proteomix WAX NP10, 4.6x250mm (3 lots of resin)
063707	ProPac WAX-10 Semi-Preparative Column (9 x 250 mm)	404NP10-10025	Proteomix WAX NP10, 10x250mm
SP5598	ProPac WAX-10 Semi-Preparative Column (22 x 250 mm)	404NP10-21225	Proteomix WAX NP10, 21.1x250mm
	WAX Guard Columns		WAX Guard Columns
063470	ProPac WAX-10G Guard Column (2 x 50 mm)	404NP10-2105	Proteomix WAX NP10, 2.1x50mm, Guard
055150	ProPac WAX-10G Guard Column (4 x 50 mm)	404NP10-4605	Proteomix WAX NP10, 4.6x50mm, Guard

HPLC Column Cross References by Manufacturers

Phenomenex	Sepax	Waters	YMC	Agilent
Luna C18, 100A	GP-C18, 120A	Symmetry C18, 100A SunFire C18, 100A	ODS-AL, 120A ProC18, 120A	Eclipse XDB C18, 80A Eclipse Plus C18, 95A
Luna C18(2), 100A	GP-C18(II), 100A GP-C18, 120A	Symmetry C18, 100A SunFire C18, 100A	ODS-AM, 120A	SB C18 Rx C18
Luna C8, 100A	GP-C8, 120A	Symmetry C8, 100A SunFire C8, 100A	ProC8, 120A	Eclipse XDB-C8, 80A Eclipse Plus C8, 95A
Luna C8(2), 100A	GP-C8(II), 100A	Symmetry C8, 100A SunFire C8, 100A		SB C8
Luna C5, 100A	GP-C4, 120A		ProC4, 120A	SB C3
Luna Phenyl-Hexyl, 100A	GP-Phenyl, 120A	XTerra Phenyl, 125A	Pack Phenyl, 120A	Eclipse XDB-Phenyl, 80A Eclipse Phenyl-Hexyl
Luna CN, 100A	HP-Cyano, 120A		Pack CN, 120A	Eclipse XDB-CN, 80A Zorbax CN
Luna NH2, 100A	HP-Amino, 120A		Pack NH2, 120A	Zorbax NH2
Luna SCX, 100A	HP-SCX, 120A			
	HP-Diol, 120A		Pack Diol, 120A	
	Polar-100, 120A		PVA Sil, 120A	
Luna Silica, 100A	HP-Silica, 120A	Atlantis HILIC	Pack Silica, 120A	Rx-Sil
Gemini C18, 110A	BR-C18, 120A	XTerra C18, 125A XBridge C18, 135A	Polymeric C18	Extended C18
Gemini C6-Phenyl, 110A	GP-Phenyl, 120A	XTerra Phenyl, 125A		SB Phenyl
Jupiter C18, 300A	Bio-C18, 300A	Symmetry 300, C18	Pack 300	SB 300 C18 Zorbax 300 Extend C18
Jupiter C5, 300A	Bio-C8, 300A	Symmetry 300, C8	ProC8, 300A	ZORBAX 300SB-C8
Jupiter C4, 300A	Bio-C4, 300A	Symmetry 300, C4	Pack Protein-RP ProC4, 300A	ZORBAX 300SB-C3
Jupiter Proteo	Bio-C18, 200A	Symmetry 300, C18	ODS-AQ, 200A	
Synergi Max-RP, 80A	GP-C8(II), 100A	Symmetry C8, 100A	YMCbasic, 120A	
Synergi Polar-RP, 80A	HP-Phenyl, 120A			
Synergi Hydro-RP, 80A	HP-C18, 120A	Atlantis T3 C18	ODS-AQ, 120A	SB Aq C18
Synergi Fusion-RP, 80A	HP-C18(II), 100A	Symmetry Shield C18 Symmetry Shield C8		Bonus RP C18, C8

HILIC Column Cross References by Manufactures

Phenomenex	Sepax	Waters	Merck/SeQuant	Agilent
Luna HILIC	Polar-Silica	Atlantis HILIC	N/A	N/A
N/A	N/A	N/A	ZIC HILIC	N/A
N/A	Polar-100	N/A	N/A	N/A
N/A	Polar-Diol	N/A	N/A	N/A
N/A	Polar-Pyridine	N/A	N/A	N/A
N/A	Polar-Imidazole	N/A	N/A	N/A