

# SAMPLE CUP A, A

## Specification

**Easy to pass** : The cap is made from the polyethylene with the slit, which the needle is easy to pass.

**High reliability** : The material of vial is the high quality polypropylene.

**World standard size** : The overall size of Sample Cup is 12 mmI.D. x 32 mm, which is the de facto world standard size.

**Comfort to use** : Conforms to the Shimadzu HPLC Auto Injector.  
(SIL-2010, SIL-20AC, SIL-20AXR, SIL-20A, SIL-10AXL, SIL-10Ai, SIL-10A, SIL-9A, SIL-6B)

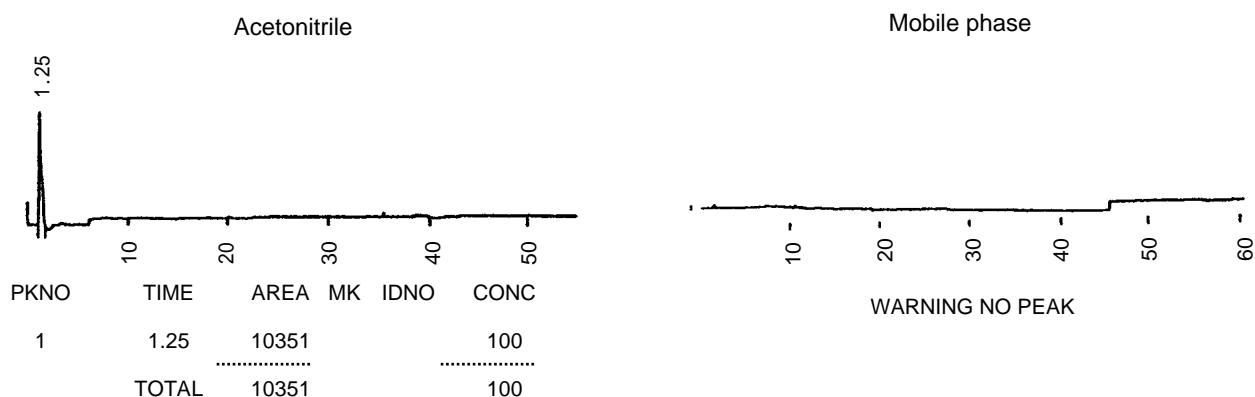
**2 versions of volume** : 200  $\mu$ L low-volume and 1.5 mL standard-volume.



## Performance of Sample Cup A type

### Elution test

The acetonitrile and HPLC mobile phase (below-mentioned) were enclosed into Sample Cup A separately for 40 hours. The solutions were analyzed to verify the presence of the eluted components. (see, below figure)



The peak at 1.25 min is the system shock.

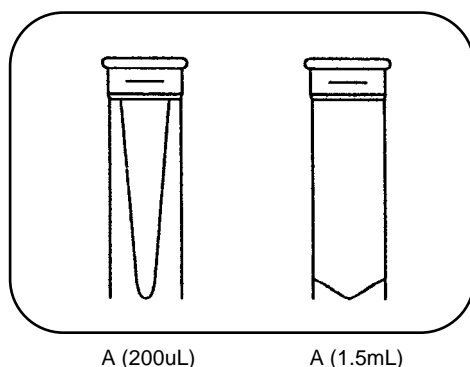
HPLC Conditions	
Column	ULTRON VX-ODS 150 x 4.6 mm
Mobile phase	10 mM Phosphate Buffer(Ph 3) / Acetonitrile : 1/1
Detection	UV-267nm 1.0 x 10 <sup>-2</sup> AUFS
Injection volume	100 $\mu$ L

### Air tightness test

There were not observed the cap come off by the vapor pressure (approximately 20 kPa), and leak from the cap when the Sample Cup A containing ethanol was heated to 45 degrees C.

### Caution

Sample Cup A type is only for aqueous solution.  
Do not heat Sample Cup A type at 45 degrees C or more.  
Carry out the blank test to verify the presence of liquation components when using solutions including organic solvents.



Product Name	Volume
Sample Cup A (1,000pcs./box)	200 uL
Sample Cup A (1,000pcs./box)	1.5 mL

Shinwa Chemical Industries Ltd. reserves the right to change product specifications, designs or prices without notice and without liability for such changes.



#### Available from:

Winlab Pty Ltd in Australia and New Zealand

[www.winlab.com.au](http://www.winlab.com.au)

Contact: [info@winlab.com.au](mailto:info@winlab.com.au)

or call 61 07 3205 5233